

КВАРТЕТ

для скрипки, кларнета, виолончели и фортепиано
(1941)

1. Liturgie de cristal

O. МЕССИАН

A Bien modéré, en poudrolement harmonieux (♩=54 environ)

comme un oiseau

VIOLON

CLARINETTE en Si \flat

VIOLONCELLE

PIANO

pp son flûte.

comme un oiseau

p express.

ppp (vibr.)

Bien modéré, en poudrolement harmonieux (♩=54 environ)

pp legato (très enveloppé de pédale)

Detailed description: This system contains the first four staves of the score. The Violin staff has a few notes and a dynamic marking of *ppp son flûte.* The Clarinet staff begins with a melodic line marked *comme un oiseau* and *p express.* The Violoncelle staff has a few notes with a dynamic marking of *ppp (vibr.)*. The Piano staff has a complex harmonic accompaniment marked *pp legato (très enveloppé de pédale)*. The tempo and mood are indicated as *Bien modéré, en poudrolement harmonieux (♩=54 environ)*.

Violon

Cl.

Violoncelle

PIANO

vers la pointe

gliss.

gliss.

Detailed description: This system contains the next four staves. The Violon staff has a series of notes marked *vers la pointe*. The Clarinet staff continues its melodic line. The Violoncelle staff has a melodic line with glissando markings (*gliss.*). The Piano staff continues its harmonic accompaniment. The tempo and mood are consistent with the first system.

* В оригинале: Quatuor pour la fin du temps (Квартет на конец времени).

** Короткое gliss.

Печатается по изданию: Durand & C^{ie}, Paris, 1942.

B

Von

Cl.

Velle

Von

Cl.

Velle

C

Von

Cl.

Velle

von
Cl.
Velle
Piano

This system contains the first four staves of the musical score. The top staff is for the voice (V on), the second for the clarinet (Cl.), the third for the violin (V elle), and the fourth for the piano. The piano part is written in two staves. The music is in a key with two flats and a 3/4 time signature. The voice part has some complex rhythmic patterns. The clarinet part has a long, sustained note with a wavy line above it. The violin part has several slurs and a 'gliss.' marking. The piano part features a complex harmonic structure with many accidentals.

von
Cl.
Velle
Piano

This system contains the second four staves of the musical score. The instrumentation remains the same. The voice part continues with complex rhythmic patterns. The clarinet part has a long, sustained note with a wavy line above it. The violin part has several slurs and a 'gliss.' marking. The piano part features a complex harmonic structure with many accidentals.

von
Cl.
Velle
Piano

This system contains the third four staves of the musical score. The instrumentation remains the same. The voice part continues with complex rhythmic patterns. The clarinet part has a long, sustained note with a wavy line above it. The violin part has several slurs and a 'gliss.' marking. The piano part features a complex harmonic structure with many accidentals.

von
Cl.
Velle
Piano

von
Cl.
Velle
Piano

von
Cl.
Velle
Piano

[F]

von

Cl.

v elle

cresc.

This system contains the first three staves of music. The violin part (top) features a melodic line with a dynamic marking of *f* and a hairpin crescendo. The clarinet part (middle) has a melodic line with a dynamic marking of *cresc.* and a hairpin crescendo. The piano part (bottom) consists of two staves with a complex harmonic accompaniment. The key signature has two flats, and the time signature is 4/4.

von

Cl.

v elle

dim.

gliss.

This system contains the next three staves of music. The violin part (top) has a melodic line with a dynamic marking of *f* and a hairpin decrescendo. The clarinet part (middle) has a melodic line with a dynamic marking of *dim.* and a hairpin decrescendo. The piano part (bottom) continues the harmonic accompaniment. The key signature has two flats, and the time signature is 4/4.

von

Cl.

v elle

pp

gliss.

This system contains the final three staves of music. The violin part (top) has a melodic line with a dynamic marking of *pp*. The clarinet part (middle) has a melodic line with a dynamic marking of *pp* and a hairpin decrescendo. The piano part (bottom) continues the harmonic accompaniment. The key signature has two flats, and the time signature is 4/4.

von
Cl.
Velle

This system contains the first three staves of music. The vocal line (von) begins with a circled '3' above it. The clarinet part (Cl.) features a melodic line with a 'cresc.' marking. The piano accompaniment (Velle) consists of two staves with complex chordal textures.

von
Cl.
Velle

This system contains the next three staves. The vocal line (von) has a dashed line above it. The clarinet part (Cl.) includes dynamic markings of *p* and *pp*. The piano part (Velle) continues with its accompaniment, featuring 'gliss.' markings in the lower register.

von
Cl.
Velle

This system contains the final three staves. The vocal line (von) ends with a *ppp* marking. The clarinet part (Cl.) also ends with a *ppp* marking. The piano accompaniment (Velle) concludes with a final melodic flourish in the right hand.

2. Vocalise, pour l'Ange qui annonce la fin du Temps

Presque vif, joyeux
(♩=104 env.)

A Robuste, modéré (♩=54 env.)

B

Violon

Clarinette
en Si \flat

Violoncelle

Piano

Robuste, modéré (♩=54 env.)

Presque vif, joyeux
(♩=104 env.)

8^{va} bassa.....!

8^{va} bassa.....!

Modéré (♩=54 env.)

V on

Cl.

v elle

Modéré (♩=54 env.)

8^{va} b.....!

8^{va} b.....!

Presque vif (♩=104 env.)

Modéré (♩=54 env.)

Von
Cl.
Velle

Presque vif (♩=104 env.)

Modéré (♩=54 env.)

C Presque vif (♩=104 env.)

Modéré (♩=54 env.)

Von
Cl.
Velle

Presque vif (♩=104 env.)

Modéré (♩=54 env.)

Von
Cl.
Velle

D Presque lent, impalpable, lointain ($\text{♩}=50$ env.)

v on

sourdine

pp

v elle

sourdine

pp

Presque lent, impalpable, lointain ($\text{♩}=50$ env.)

ppp gouttes d'eau en arc-en-ciel

*ra ra ra ra ra ra ra **

v on

v elle

8

ra ra ra ra ra ra ra ra

v on

v elle

*ra ra ra ra ra **

E

von

velle

p

pp

von

velle

ra ra ra ra ra ra

von

velle

*ra ra ra **

von
 velle

F

von
 velle

von
 velle

Von
Velle

8
ra ra ra ra ra ra ra ra ra ra ra *

Von
Velle

pp
pp
ppp
ra ra ra ra ra

Von
Velle

ra *

von
y elle

This system contains the first system of music. It features two vocal staves at the top, labeled 'von' and 'y elle', with melodic lines and slurs. Below them is a grand staff for piano, consisting of a right-hand staff with dense, arpeggiated chords and a left-hand staff with a more rhythmic accompaniment of chords and eighth notes.

von
y elle

This system continues the musical piece. The vocal lines for 'von' and 'y elle' are present, with the 'y elle' line ending in a fermata. The piano accompaniment continues with similar textures, including arpeggiated chords in the right hand and rhythmic accompaniment in the left hand.

von
y elle

pp *ppp* otez la sourdine

pp *ppp* otez la sourdine

ppp *pppp*

This system concludes the piece. It includes dynamic markings: *pp* and *ppp* for the vocal lines, and *ppp* and *pppp* for the piano accompaniment. The instruction 'otez la sourdine' (remove the mute) is written at the end of the system. The vocal lines end with fermatas, and the piano accompaniment concludes with a final chord and a fermata.

Presque vif (♩=104 env.)

H

Von *p cresc. molto*

Velle *p cresc. molto*

Presque vif (♩=104 env.)

Modéré (♩=54 env.)

Von *fff*

Cl. *fff*

Velle *fff*

Modéré (♩=54 env.)

fff fulgurant; pressez ce trait

Cl.

3. Abîme des oiseaux

Lent, expressif et triste (♩=44 env.)

Clerinette
en Sib

P désolé

ppp

f

Presque vif, gai, capricieux (♩=126 env.)

sans presser,
progressif et puissant

ppp — *cresc. molto* *fff*

f
ensoleillé, comme un oiseau, très libre de mouvt

f

f

pressez
brillant.

f *p* *f* *f*

Lent (♩=44 env.) Presque vif (♩=126)

sans presser, progressif
et puissant

ppp — *cresc. molto* *fff*

Musical staff with notes and slurs.

pressez
cresc.

Musical staff with notes and slurs.

rall. Modéré (♩=92 env.)
ff

Musical staff with notes and slurs.

pp (écho) ff

Musical staff with notes and slurs.

fp fp fp f dim. rall.

Musical staff with notes and slurs.

Lent, expressif et triste (♩=44 env.)
p désolt

Musical staff with notes and slurs.

Musical staff with notes and slurs.

ppp

Musical staff with notes and slurs.

sans presser, progressif et puissant
ppp — fff
cresc. molto

Musical staff with notes and slurs.

Moderate (♩=92 env.) Presque vif (♩=126 env.) Lent (♩=100 env.)
ff pp écho brillant, pressez ff

Musical staff with notes and slurs.

4. Intermède

A Décidé, modéré, un peu vif ($\text{♩} = 96 \text{ env.}$)

Violon
f

Clarinette en Si \flat
f

Violoncelle
f

Von
ff

Cl.
ff

Velle
ff

Von
f *pp* *mf*

Cl.
f *pp* *f*

Velle
f *pp* *mf*

Von
mf *f*

Cl.
mf *pp*

Velle
mf *f*

Violon (V on), Clarinet (Cl.), and Violoncelle (V elle) staves. Section D. Dynamics include *pizz.*, *pp*, and *p chantant*.

Violon (V on), Clarinet (Cl.), and Violoncelle (V elle) staves. Dynamics include *arco*, *p chantant*, *pp*, and *pizz.*.

Violon (V on), Clarinet (Cl.), and Violoncelle (V elle) staves. Section E. Dynamics include *p*, *pp*, and *f*.

Violon (V on), Clarinet (Cl.), and Violoncelle (V elle) staves. Section F. Dynamics include *p*, *pp*, and *mf*.

Violon (V on), Clarinet (Cl.), and Violoncelle (V elle) staves. Dynamics include *pp* and *p*.

Violon (V on), Clarinet (Cl.), Violoncello (V elle)

Section G

Violon: *p*, *pp*

Clarinete: *pp*, *p*

Violoncello: *pp*

Violon (V on), Clarinet (Cl.), Violoncello (V elle)

Section H

Violon: *mf*, *p*, *ff*

Clarinete: *f*, *ff*

Violoncello: *mf*, *p*, *ff*

Violon (V on), Clarinet (Cl.), Violoncello (V elle)

Section I

Violon (V on), Clarinet (Cl.), Violoncello (V elle)

Section I

Violon: *ff*, *f*

Clarinete: *ff*, *f*

Violoncello: *ff*, *f*

Violon (V on), Clarinet (Cl.), Violoncello (V elle)

Section I

Violon: *pizz.*, *arco*, *f*

Clarinete: *pizz.*, *arco*, *f*

Violoncello: *pizz.*, *arco*, *f*, *gliss. (long)*, *p*

* Gliss. на всю данную ноты Су.

5. Louange à l'Éternité de Jésus

Infiniment lent, extatique (♩=44 env.)

A

Violoncelle

p majestueux, recueilli, très expressif

Infiniment lent, extatique (♩=44 env.)

Piano

p

V elle

etc.

V elle

cresc.

cresc.

B (8^{ve} réelle)

v elle

f *dim.*

v elle

p *cresc.*

C

v elle

f

v elle

p cresc. *f* *cresc.*

p cresc. *f* *cresc.*

v elle

ff *cresc. molto* *ppp subito* sans vibr.

v elle

vibr. *peu à peu p* *più p* sur le Ré

v elle

sur le La *dim.*

v elle

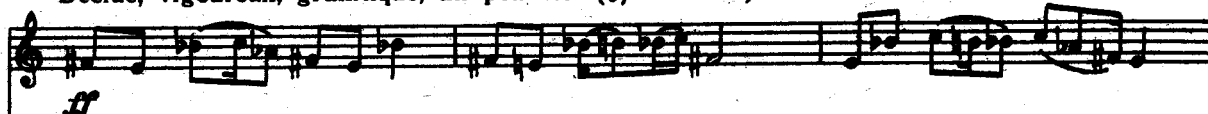
ppp *ppp* *en se perdant* *pppp* (7)



6. Danse de la fureur, pour les sept trompettes

A Décidé, vigoureux, granitique, un peu vif (♩ =176 env.)

Violon



Clarinette
en SI_\flat

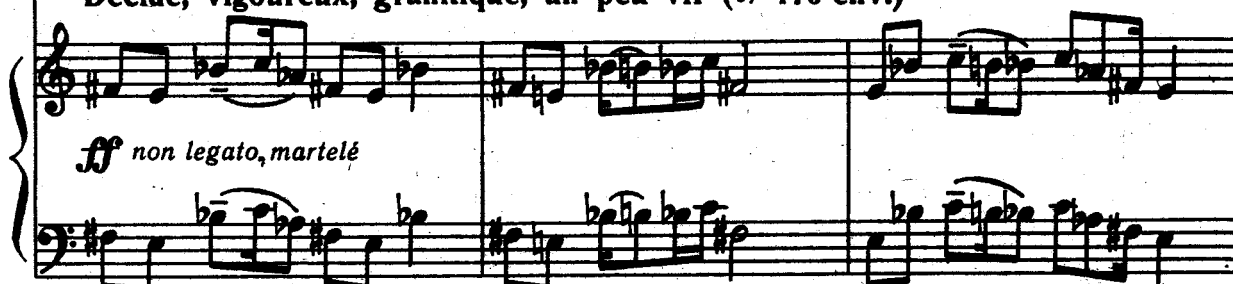


Violoncelle



Décidé, vigoureux, granitique, un peu vif (♩ =176 env.)

Piano



Violon



Cl.



Violoncelle



B

Von

Cl.

velle

C

Von

Cl.

velle

8^{ve} réelle

Von

Cl.

velle

8^{ve} réelle

Violon
Clarinete
Violoncello
Piano

dim.

D
Violon
Clarinete
Violoncello
Piano

p

Violon
Clarinete
Violoncello
Piano

ff

E

Von
Cl.
Velle

V on
Cl.
V elle

V on
Cl.
V elle

pressez un peu pressez encore

f *cresc.* *cresc. sempre*

f *cresc.* *cresc. sempre*

f *cresc.* *cresc. sempre*

pressez un peu pressez encore

f *cresc.* *cresc. sempre*

F Au mouv^t

von
cresc. molto *pp* lointain

Cl.
cresc. molto *pp* lointain

velle
cresc. molto *pp* lointain

cresc. molto *pp* legato

Au mouv^t
 lointain

von

Cl.

velle

von

Cl.

velle

G

von

Cl.

v elle

von

Cl.

v elle

pressez
cresc.

cresc.
pressez

non legato, martelé
cresc.

von

Cl.

v elle

[H] Un peu plus vif (♩=200 env.)

Un peu plus vif (♩=200 env.)

ff non legato, martelé

1 2 4 5 8 2 1 2 1 5 4 2 5 3 2 1 3 1 1

Von
Cl.
Velle

This system contains the first three staves of music. The Violon (Vn) part is on a treble clef staff, the Clarinet (Cl.) part is on a treble clef staff, and the Violoncelle (Vcl) part is on a bass clef staff. Below these are the piano accompaniment staves, with a grand staff (treble and bass clefs) and a 4/4 time signature. The music is in a key with one sharp (F#) and includes various rhythmic patterns and dynamics.

Au mouvt (♩=176 env.)

Von
Cl.
Velle

This system is marked with the tempo instruction *Au mouvt (♩=176 env.)*. It features the same three instrumental parts as the first system. The piano accompaniment includes a *ff* dynamic marking. The music continues with similar rhythmic motifs.

I *Un peu plus vif (♩=200 env.)*

Von
Cl.
Velle

This system is marked with the tempo instruction **I** *Un peu plus vif (♩=200 env.)*. The Violon part begins with a *ff* dynamic. The Violoncelle part has a *bronzé, cuité* marking. The piano accompaniment is marked *ff non legato, martelé*. The music is more rhythmic and includes a *bronzé, cuité* marking in the piano part.

Von

Cl.

vclle

ff

Von

Cl. *bronzé, cuiré*

vclle

ff *bronzé, cuiré*

Von

Cl. *bronzé, cuiré*

vclle

ff *bronzé, cuiré*

von

Cl.

velle

Plus vif (♩=108 env.)

von

Cl.

velle

Plus vif (♩=108 env.)

ff non legato, martelé

von

Cl.

velle

8^{ve} réelle

M

von
Cl.
Velle

f cresc.

von
Cl.
Velle

ff

8^{ve} réelle

von
Cl.
Velle

N pressez insensiblement

ff *f* *cresc.*

pressez insensiblement

ff *f* non legato, martelé *cresc.*

Violon
Clarinete
Violoncelle
Piano

ff cresc. sempre

1 3 1 2 5 5

Violon
Clarinete
Violoncelle
Piano

fff sempre

fff cresc. sempre

4 1 2 1 4 5 2 1 2 5 2 1 2 5

Violon
Clarinete
Violoncelle

pressez beaucoup

Un peu moins vif ($\text{♩} = 108 \text{ env.}$)

f cresc. molto

f cresc. molto

f cresc. molto

Violon
Clarinete
Violoncelle
Piano

pressez beaucoup

Un peu moins vif ($\text{♩} = 108 \text{ env.}$)

f cresc. molto

4 2 1 5 5

3 1 3 2 1 3 1 3 1 3 2 1 3 1 3 1 3 2

von
Cl.
Velle

pp *cresc. molto* *rall.*

pp *cresc. molto*

pp *cresc. molto*

pp *cresc. molto* *rall.*

pp *trille*

Presque lent, terrible et puissant (♩=76 env.)

von
Cl.
Velle

pp *pp* *pp*

8^{ve} réelle

Presque lent, terrible et puissant (♩=76 env.)

pp *pp* *pp*

8^a bassa *Red.* *** *8^a bassa*

Von
Cl.
Velle

8^{ve} réelle

Von
Cl.
Velle

8^{ve} réelle

P 1^{er} Mouvt (♩)=176 env.)

Un peu plus vif (♩)=200 env.)

1^{er} Mouvt (♩)=176 env.)

Un peu plus vif (♩)=200 env.)

pp legato

ff non legato, martelé

Von
Cl.
Velle

Moins vif (♩)=160 env.)

Moins vif (♩)=160 env.)

VII. Fouillis d'arcs-en-ciel, pour l'Ange qui annonce la fin du Temps

Rêveur, presque lent ($\text{♩}=50$ env.)
8^{ve} réelle

Violoncelle

p *espress.*

Rêveur presque lent ($\text{♩}=50$ env.)

Piano

p

ra. (etc.)

vclle

vclle

vclle

ra.

*

B Robuste, modéré, un peu vif (♩=66 env.)

von
Cl.
lle

Robuste, modéré, un peu vif (♩=66 env.)

résonnance en halo

8^a bassa

von
Cl.
vclle

fff

8^a bassa

von
Cl.

vclle

col legno *vibr.* *pp*

pp

f

p

C **pressez un peu**

Cl.

Velle

pressez un peu

mf **7** *cresc.*

raa **Au mouv^t**

Von *rall.* **fff trille**

Cl. **fff trille**

Velle *arco* *gliss.* **fff** *8^{ve} réelle* *gliss.*

Au mouv^t *rall.* **ff** **fff trille**

raa *raa* **8^{ve} réelle** *

Von **rall. molto**

Cl.

Velle

rall. molto

dim. simile *(etc)*

* *Gliss.*, начинающееся с первой доли такта, выполнять на всю длину данной ноты; *gliss.* со второй и третьей долей такта выполнять точно от обозначения «*gliss.*»

Rêveur, presque lent (♩)=50 env.)

D sur le Ré

Von *f* *express.*

Cl. *ppp*

Rêveur, presque lent (♩)=50 env.)

pp

sur le Sol jusqu'à*

Von

Cl.

Von

Cl.

• pressez

Von

Cl.

pressez

Robuste, modéré, un peu vif (♩=66 env.)

Von

Cl.

Violle

ff *p* *mf*

Robuste, modéré, un peu vif (♩=66 env.)

ff *p* *mf*

Von

Cl.

Violle

simile *cresc.* *ff*

simile *cresc.*

etc.

Von
Cl.
Velle

ff *p* *cresc.*

ff *ff*

ff *p* *ff* *p* *ff* *p*

8°b

Von
Cl.
Velle

ppsub. **F**

ppsub. *ppsub.* *pp.*

ff sempre

ff *p*

8°b

von
Cl.
v elle

pp

ff

ff *p*

a^a b

von
Cl.
v elle

f

f

f *p* *f*

rea *rea* *rea* *rea* *

von
Cl.
v elle

p cresc.

p cresc.

p cresc.

p

Von Cl. Velle

Même mouv^t (♩=66 env.)

molto

pp

Même mouv^t (♩=66 env.)

pp

11 11 8

6 6 6

Cl. Velle

mf *express.*

col legno

pp *p*

Von Cl. Velle

pp

11 11 8

6 6 6

Von Cl. Velle

pp

sempre

pp *p*

H Même mouvt (♩=66 env.)

Von *mf*

Cl. *pp* *pizz*

Velle *p*

Même mouvt (♩=66 env.)

f

p

Von *cresc.*

Cl.

Velle

f

p

pressez un peu sur le Sol jusqu'a *

Von *mf* *cresc.* *ff* *rall.*

Cl. *mf* *cresc.* *ff*

Velle *arco* *mf* *cresc.* *ff*

pressez un peu

mf *cresc.* *ff* *ff* *rall.*

7 *7* *9* *7*

I Au mouv^t

Violon (V on): *fff* trille

Clarinete (Cl.): *fff* trille

Violoncelle (Velle): *fff* gliss. *8^{ve} réelle*

Au mouv^t

Piano (P): *fff*

Violon (V on): *fff* trille

Clarinete (Cl.): *fff* trille

Violoncelle (Velle): *fff* gliss. *8^{ve} réelle*

Piano (P): *fff*

Violon (V on): *f*

Clarinete (Cl.): *f* *tournoyant*

Violoncelle (Velle): *f*

Piano (P): *f*

Von

Cl.

Velle

f

cresc.

6

6

6

dim.

mf

8

Von

Cl.

Velle

f

cresc.

cresc.

8

cresc.

Von *sempre cresc.*

Cl. *sempre cresc.*

Velle *sempre cresc.*

simile *sempre cresc.*

Von *rall. molto*

Cl. *rall. molto*

Velle *cresc. molto* *3^{ve} réelle* *rall. molto*

cresc. molto

Extatique (Mouv^t du début) (♩=50 env.)

Von *fff* *express.*

Cl. *fff* *express.*

Velle *3^{ve} réelle* *fff* *express.*

fff Extatique (Mouv^t du début) (♩=50 env.)

Von
Cl.
Velle

express.

express.

This system contains the first three staves of a musical score. The top staff is for the voice (V on), the second for the clarinet (Cl.), and the third for the violin (V elle). The piano accompaniment is shown in a grand staff below. The music features trills and slurs, with the instruction 'express.' appearing twice.

Von
Cl.
Velle

This system contains the next three staves of the musical score. It continues the vocal and piano parts from the first system, maintaining the same instrumentation and musical style.

Von
Cl.
Velle

This system contains the final three staves of the musical score on this page. It concludes the vocal and piano parts, ending with a final cadence in the piano accompaniment.

von

Cl.

vclle

von

Cl.

vclle

trille

von

Cl.

vclle

Robuste, modéré, un peu vif (♩=66 env.)

Robuste, modéré, un peu vif (♩=66 env.)

brutal

sec.

sans Red.

sf

p

8^a

13201

VIII. Louange à l'Immortalité de Jésus

A Extrêmement lent et tendre, extatique (♩=36 env.)

Violon

p expressif, paradisiaque 3

Extrêmement lent et tendre, extatique (♩=36 env.)

Piano

p simile

Von

B sur le Sol sur le Ré

mf avec amour

mf

etc.

Von

pp *cresc.* 3

pp *cresc.*

von

f *dim.*

von

p *mf express.*

von

pp *peu à peu p* *simile peu à peu p*

von

D

sur le Sol

sur le Ré

Von *mf avec amour* *pp* *cresc.*

Von

Von *f cresc.* *ff* *dim.* *dim. sempre*

un peu ralenti *Au mouvt*

f cresc. *ff* *dim.* *simile dim. sempre*

Von *ppp* *ppp* *perdendosi*